



BENEFITS

- Measurement ranges: -40...3000°C*
- Scan angle: up to 120° (adjustable)
- Modular system
- Compatible with RAYTEK Marathon MM and XR series pyrometers
- Indication of measuring spot position by laser point*
- Wide choice of models for various spectral and temperature ranges
- High-quality, reliable industrial drive unit
- Outputs: digital: solid-state relay
analog: 0/4...20mA
- Robust IP65 certified housing
- High-performance air purge unit ensuring a clean measuring window
- Easy mounting to existing profile systems ('Bosch Rexroth', 'item' etc.)

*) depending on the used pyrometer



DESCRIPTION / EXAMPLE OF APPLICATION

The SELMATEC IR 1D-Scan consists of a RAYTEK pyrometer and a swiveling device, allowing the system to measure temperatures along an axis in industrial manufacturing processes. This is an ideal solution for recording temperature profiles and detecting hot spots at continuous conveyor processes and process rollers (e.g. application rollers, corrugation rollers or tempering rolls). The system can be equipped with RAYTEK pyrometer series Marathon **MM** and **XR**. By selecting from additional options, such as a laser sighting device, shorter response times and thus faster scan speeds and/or a variable focus, a solution for almost any metrological problem can be achieved. Due to standard interfaces (analog output 0/4...20mA, digital output, RS485 interface) and mounting capabilities to common system profiles, a very easy and cost-effective integration into existing systems is possible.

MEASURING PARAMETERS

Scan angle	Max. 120° (adjustable)
Scan speed	6°/sec (1D-Scan XRLT)
(model examples)	36°/sec (1D-Scan MMLT)
Emissivity	0,1...1,0 digitally adjustable
Signal processing	°C/ °F, min-, max-, mean, extended hold, background temperature compensation
Analog output	0/4...20mA
Digital output	Solid-state relays
Power supply	Pyrometer: 24 VDC; min. 500 mA Drive: 24VDC; I _{max,in} = 8A; P _{max} = 100W
Scope of delivery	1D-Scan System incl. desired RAYTEK pyrometer; evaluation and parameterization software Data-Temp Multidrop® incl. RS232/RS485 adapter; IntelliTool® parameterization software for the drive, as well as a 17-pin and a 4-pin cable socket suitable for the device connectors of the system

GENERAL PARAMETERS

Housing	Steel, powder-coated; aluminium profile
Protection class	IP65
Ambient temperature	0...50°C
Storage temperature	-10...65°C
Relative humidity	10...90%, not-condensing
Vibration resistance	IEC 68-2-6, 2G, 11 - 150Hz; 3 axes
Impact load	IEC 68-2-27, 5G, 11ms duration; 3 axes
Mechanical scanning	MTBF: 20.000 hours
Dimensions (sensor unit)	481 x 140 x 86mm
Weight (sensor unit)	approx. 5,5...6 kg, depending on the model
Warranty	12 months



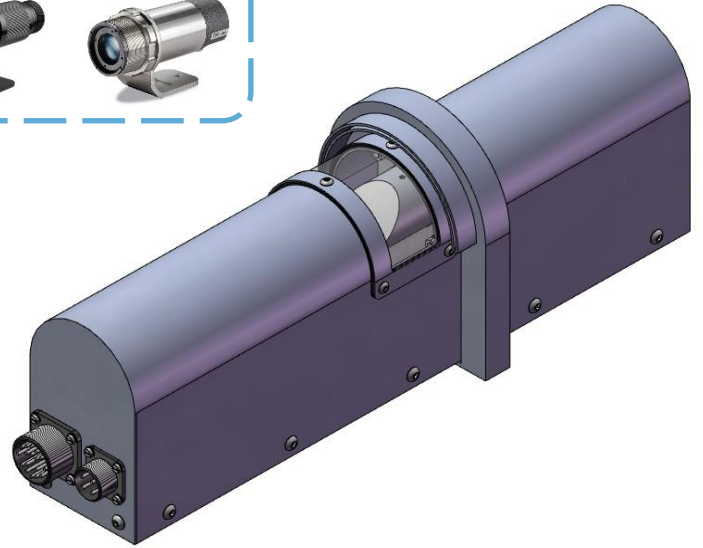
MODELS

- SEL-1DSCAN-XRLTH Measuring range: -40...600°C
Scan speed: 6 °/seconds
 - SEL-1DSCAN-MMLT Measuring range: -40...800°C
Scan speed: 36 °/seconds
- Further models upon request



ACCESSORY PARTS

- SEL-1DSCAN-ACAP Air purge unit
- SEL-1DSCAN-ACCB4 Connection cables; pre-assembled cable socket/remote wires; 4m
- SEL-1DSCAN-ACPWLT Replacement protection (Foil)



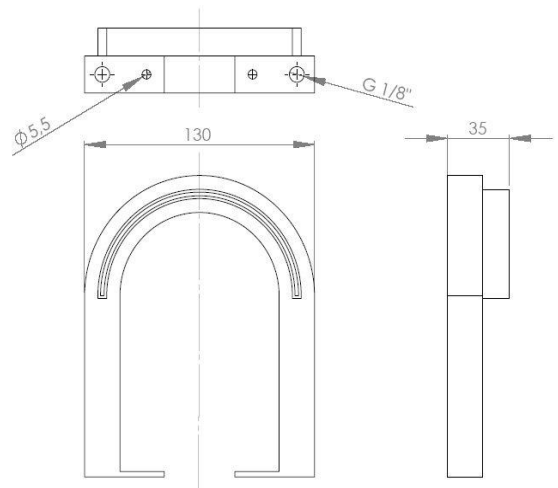
Air purge unit

SEL-1DSCAN-ACAP



Replacement window

SEL-1DSCAN-ACPWLT



System unit with connection dimensions (incl. air purge unit)

