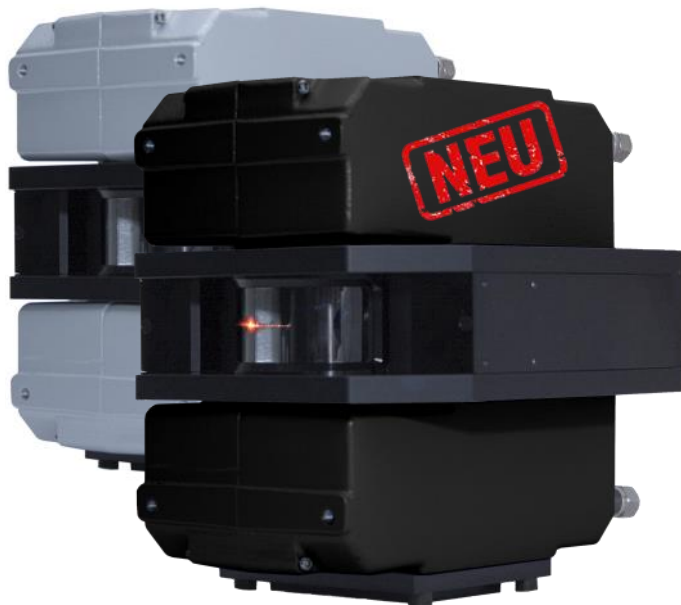




NEW AT SELMATEC: MP300

Many industries are continuously working to increase their process speeds. This means equally increasing demands on the respective measuring systems. In the production of structural parts in the automotive industry, for example, high-speed feeders for component transport require extremely high measuring frequencies of imaging temperature measurement systems.

Due to ongoing exchange with our customers and cooperation with our partner FLUKE Process Instruments, we are able to offer you a broad portfolio of state-of-the-art sensors.

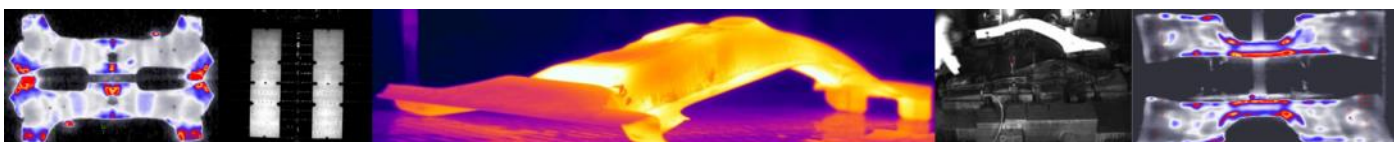


The newly developed MP300 with its doubled line frequency of 300 HZ will continue to ensure full-area, high-resolution component inspection in the future - even at extreme process speeds.

Upgrading to a new scanner model also benefits standard measuring systems by improving the detailed display of the temperature profile.

ALL OF THE ADVANTAGES AT A GLANCE

- High scanning speed of 300 lines per second
- up to 1024 measuring points per line
- wide range of spectral and temperature ranges
- high quality scanner motor with MTBF 40.000 h
- integrated Ethernet TCP/IP interface
- PC independent alarm output
- PC independent 4-20 mA interfaces (3 outputs)
- I/O module support for up to 10 sectors/zones (PC independent)
- internal line laser as sighting aid
- robust IP65 housing
- air purge attachment to maintain a clean measuring window
- integrated water cooling





NEW MODELS AT A GLANCE

MODELS*	MEASURING FREQUENCY	SPECTRAL RANGE	TEMPERATURE RANGE
MP1501ML	150 Hz	1 µm	600 bis 1500 °C
MP3001ML	300 Hz		650 bis 1500 °C
MP1501MH	150 Hz	1 µm	700 bis 1800 °C
MP3001MH	300 Hz		700 bis 1800 °C
MP1502M	150 Hz	1,6 µm	350 bis 1500 °C
MP3002M	300 Hz		400 bis 1500 °C
MP1503M	150 Hz	2,4 µm	200 bis 1500 °C
MP3003M	300 Hz		250 bis 1500 °C

*As usual, you can find MP150 models with other temperature ranges on our [website](#)



If you are unsure which solution is the right one for your application, please briefly describe the specific requirements of your application

