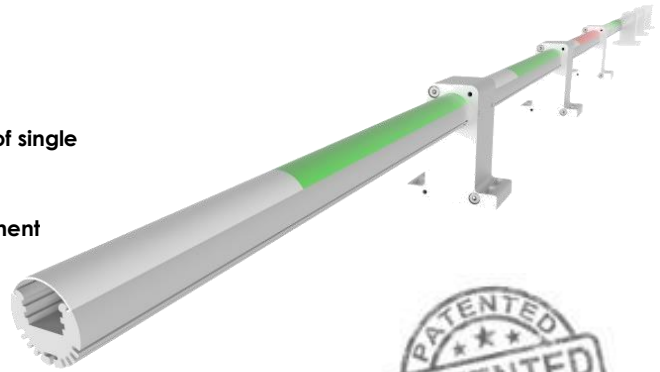




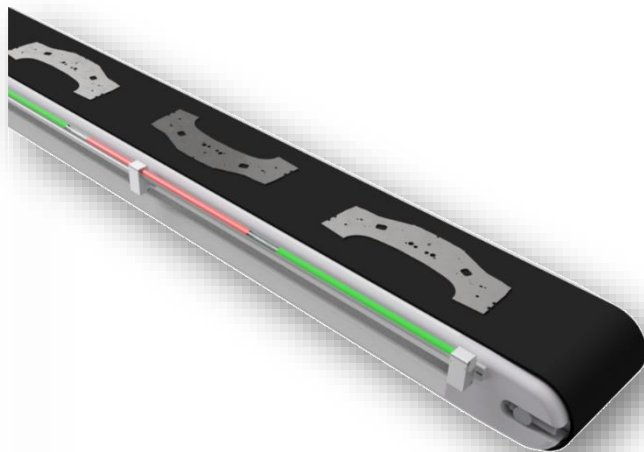
## THE ADVANTAGES AT A GLANCE

- Continuous status display not ok / ok / laboratory parts of single or stacked products
- Individual luminous width per product
- Pulsating colors for people with red-green vision impairment
- Synchronized with belt speed
- Easy to mount 2 m segments
- LED stripe scalable up to 30 m
- Selmatec controller unit, DIN rail mounting
- Galvanically isolated inputs (digital, Ethernet)
- Optimal Ethernet integration in SelVision system
- Preconfigured recipe/lighting patterns
- Plot mode via digital inputs



## DESCRIPTION / EXAMPLES OF USE

The LED-status-stripe shows the respective status of each product on the conveyor by means of a selectable light color of the LEDs at the position of the specific component. The LED-status-stripe is controlled by a connected controller. By means of the incremental encoder, the actual conveying step width of the component is determined and thus the respective component status is synchronously clocked into the LED-status-stripe. The delimitation of the component status displays to each other (gap between the statuses) is done by defining off the part width. The status indication of stacked parts can also be considered by means of gaps between the statuses and the definition off the part width. The LED display width is divided by the stacked part quantity. Thus, a status can be displayed for each stacked part.



## GENERAL PARAMETERS

IP Code	IP50 (IEC 60529)
Ambient air temperature	0 – 50 °C
Storage temperature	-25 – 65 °C
Relative air humidity	10 ... 90 %, non-condensing
Mechanical scanning system	MTTF: 292,2 Years
Resolution	30 LED/m
LED-Stripe dimension	Ø 24 mm x 2000 mm Segment + mounting bracket
LED-Stripe length	Up to 30 m (in 2 m segments)
Weight	0,5 kg/m

## ELECTRICAL PARAMETERS

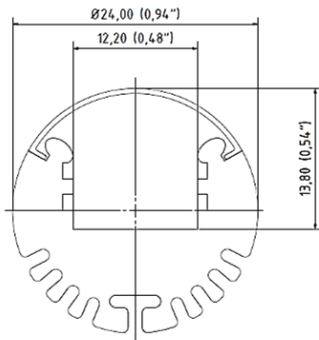
Inputs	8 digital inputs (galvanically isolated), 24 V, with LED-Indicator
Incremental Encoder Connection	Operating voltage 5 V / 24 V Output function TTL 50 mA
Digital Network-communication	Telnet TCP/IP Protocoll 10/100 Mbit/s, RJ45
Power supply	12 VDC, 8 A (max.)
CE conformity	EN601010-1: 2010



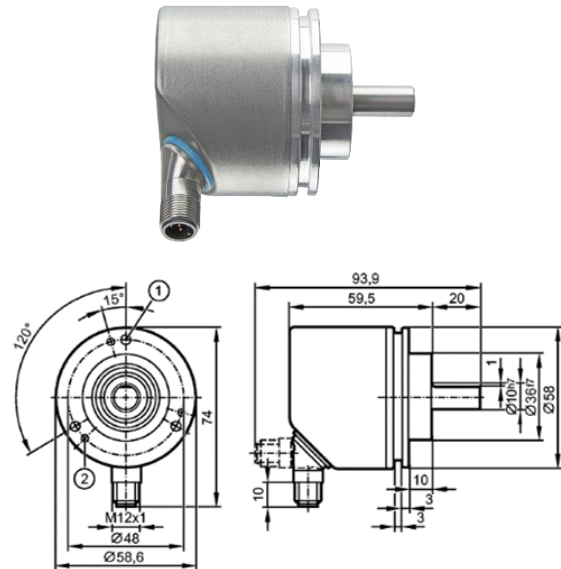
## SUPPLIES

The LED-status-stripe is supplied with mounting brackets for conveyor, Selmatec controller unit (DIN rail mounting), incremental encoder, spring arm for encoder, software and operating instructions including circuit diagram.

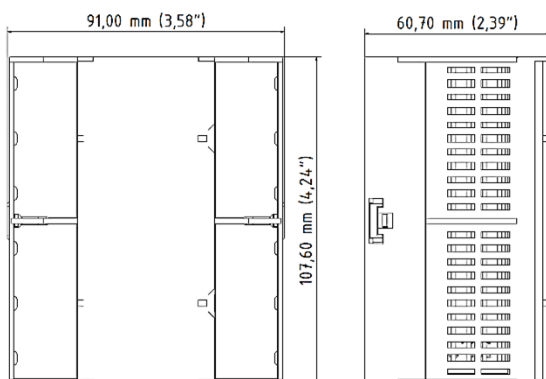
### LED-Stripe



### Incremental Encoder



### Selmatec controller unit, DIN rail mounting



### Spring arm for encoder



### Mounting brackets for conveyor

