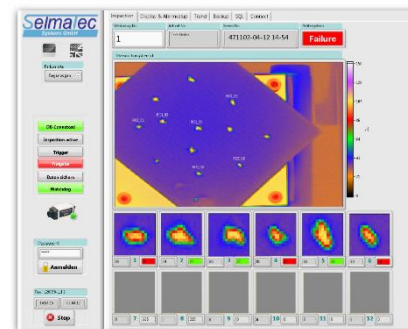




BENEFITS

- Monitoring of hot-melt adhesive applications
- Punctual evaluation of hot glue depending on freely parameterizable temperature and size per application point
- Alerting and documentation in case of faulty parts
- Trend curve for informing employees on site
- Visualization of IR recordings and each point of application
- High integration through OPC or analogue/digital signals
- Variable coupling to existing system control for automated transfer of alarm thresholds, release, selection of test recipe, ...



DESCRIPTION / APPLICATION EXAMPLES

The **IR Adhesive-Scan HT IC®** is a contactless hot-melt monitoring system that controls the temperature of a discontinuous hot-melt adhesive application inline using the **P120 LT thermal imaging camera from RAYTEK**. Immediately after application of the adhesive, the individually configurable areas are evaluated and the component released for further executed. Both the hot-melt application temperatures and the order size of each individual application point are monitored. Any number of test recipes can be configured, which are preloaded fully automatically during a tool change. Thus, a tool change requires no user intervention on the monitoring system.

All relevant measured values are visualized on a touch panel PC and at the same time transferred directly to the higher-level system control for the necessary alarm and control tasks. For traceability, the test information is archived in an SQL database including order number and part number.

The provision of variety of industrial standard interfaces allows easy integration of the system in existing or new process control.

MEASURING PARAMETERS

TEMPERATURE RANGE	-40 ... 500°C
MEASURING ACCURACY	±2 °C OR 2% (OF MEASUREMENT VALUE)
OPTICS	21,7° / 30° / 45°
NUMBER OF PIXELS	320 x 240
DETECTOR	UNCOOLED MICRO BOLOMETER 8... 14µM
EMISSION LEVEL	0,1 ... 1,0 DIGITAL ADJUSTABLE
INTERFACE	ETHERNET
ETHERNET	30 FRAMES/S
TRANSMISSION RATE	
PLANT COUPLING	OPC (VIA OPC-TAGS) DIGITAL (OPTIONAL) ANALOGUE (OPTIONAL)
OUTPUT SIGNALS	ANALOGUE OUT (OPTIONAL) DIGITAL OUT RELAYS (OPTIONAL) DIGITAL OUT RS485/232 (OPTIONAL) DIGITAL OUT ETHERNET TCP/IP (OPTIONAL)
SCOPE OF DELIVERY	SENSOR UNIT, ASSEMBLY ADAPTER, TOUCH PANEL PC WITH SWIVEL CONTROL ELEMENT, INCL. MONITORING SOFTWARE AND DOCUMENTATION

GENERAL PARAMETERS

PROTECTION CLASS	IP54 (IEC60529)
AMBIENT TEMPERATURE	-15 ... 50°C
STORAGE TEMPERATURE	-40 ... 70°C
RELATIVE HUMIDITY	... 90%, NOT CONDENSING
POWER SUPPLY	12V DC
POWER CONSUMPTION	8W (MAX. 13W)
IMPACT RESISTANCE	294M/S ² (30 G), (IEC60068-2-6)
AIR PURGE	STANDARD
MAX. PRESSURE STANDARD	3BAR
DIMENSIONS (SENSOR UNIT)	65X65X208 MM
WEIGHT (SENSOR UNIT)	APPROX. 1,0KG



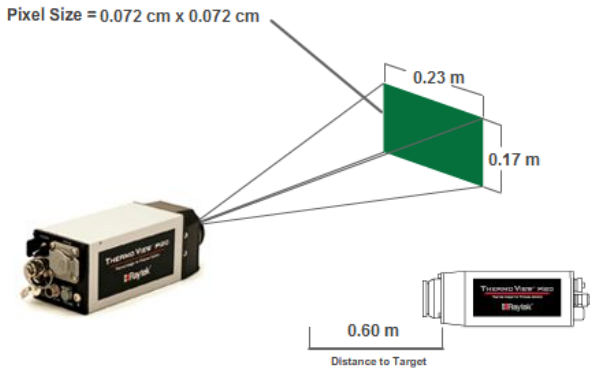
CUSTOMIZED
ENGINEERING

Monitoring of hot-melt adhesive applications

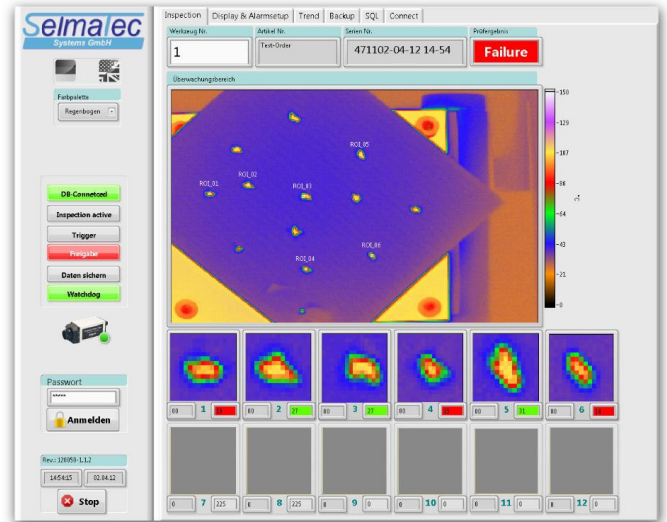
IR ADHESIVE-SCAN HT IC®

data sheet

EXAMPLE FIELD OF VIEW (FOV) OF THE COMPONENT



SOFTWARE LAYOUT



OPTIONAL ORDER INFORMATION

ISO CALIBRATION CERTIFICATE	CERTIFICATE OF THE CAMERA BASED ON NIST / DKD CERTIFIED MEASURING PROBE
OPERATING UNIT	CARRYING SYSTEM OR INDUSTRIAL WORKSTATION
SOFTWARE UPGRADES	INDIVIDUAL EXPANSIONS ARE SHORT-TERM REALIZABLE

SYSTEM LAYOUT & COMPONENTS

